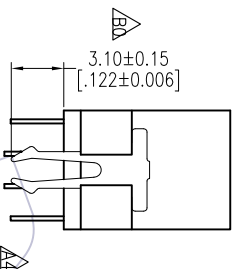
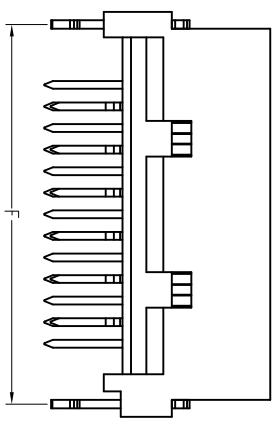
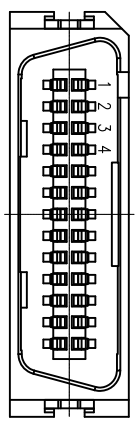


# HSF

**NOTES:**

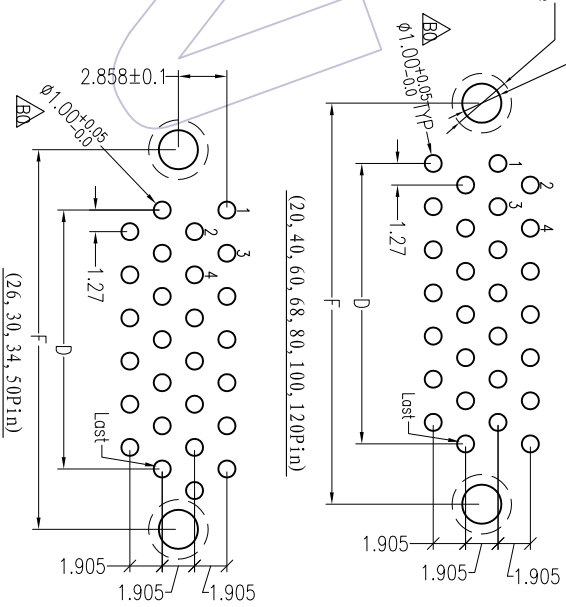
Rated Current: 0.5AMP  
 Contact Resistance: 35mΩ max  
 Withstand Voltage: 500V AC/DC  
 Insulation Resistance: 500MΩ min  
 Operation Temperature: -40°C to +125°C

Contact Material: Phosphor Bronze  
 Contact Plating: Au and Sn Over Ni  
 Insulator Material: PBT+30%G.F UL94V-0



2-φ2.30±0.05Hole  
 φ3.50 Land  
 Soldering Side

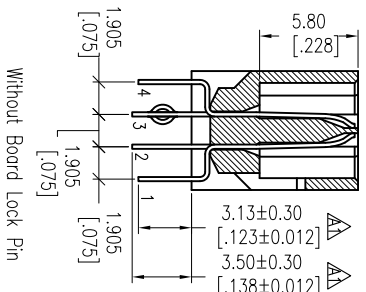
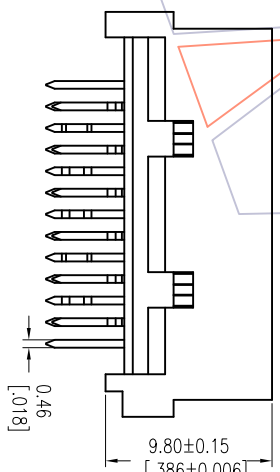
Recommended P.C.B Layout (Top Side)  
 (PCB BOARD TOLERANCE±0.05)



## Ordering Information

6320D-XXX SD SI PX T 01

No. of Pins Contact Plating Type Packing  
 SI=5u"Gold/Tin N=Without Board Lock Pin T=Tube  
 S2=5u"Gold/Tin W=With Board Lock Pin



No. of Pins	Dimension					
	A	B	C	D	E	F
20	20.03	16.58	13.23	11.43	18.04	18.54
26	23.84	20.39	17.04	15.24	21.85	22.35
30	26.38	22.93	19.58	17.78	24.39	24.89
34	28.92	25.47	22.12	20.32	26.93	27.43
40	32.73	29.28	25.93	24.13	30.74	31.24
50	39.08	35.63	32.28	30.48	37.09	37.59
60	45.43	41.98	38.63	36.83	43.44	43.94
68	50.51	47.06	43.71	41.91	48.52	49.02
80	58.13	54.68	51.33	49.53	56.14	56.64
100	70.83	67.38	64.03	62.23	68.84	69.34
120	83.53	80.08	76.73	74.93	81.54	82.04

REV	DATE	MODIFICATION DESCRIPTION	CHANGE
B0	2012/04/28	Change PCB Layout Dimension: Add 3.10±0.15	
A5	2012/02/16	Change Plastic Structure Size	
A4	2011/12/12	ADD With Board Lock Pin	
A0	2010/03/27	NEW	

OPERATION	DRAW	DATE
XX	Huang	2012.04.28
XXX	CHECK	
XXXX	APPROVE	

SCALE	FIT	PART NO.
UNIT	mm	6320D-XXXXSDSXPXT01
SIZE	A4	
SHEET	1/1	

OPERATION	ANGLE	APPROVE	DATE
±0.40	±3°		
±0.25			
±0.15			

# WCON

WCON-Dongguan  
 Http: www.wcon.com  
 WCON-Kunshan

Tel: +86 769 85358920 Tel: +86 512 57468408  
 Fax: +86 769 85358915 Fax: +86 512 57468468  
 E-mail: sales@wcon.com E-mail: Sales@wcon.com